

INVERTER Ceiling

Easily concealed in any installation

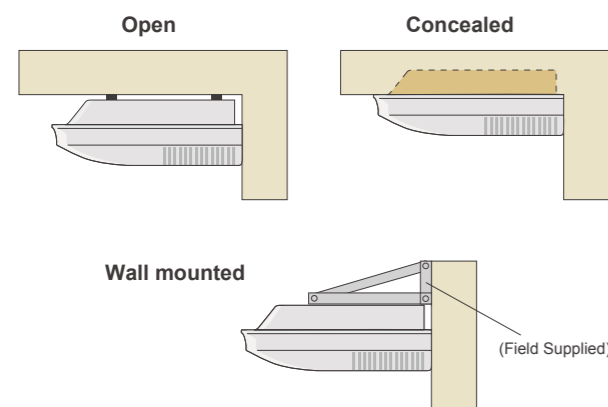


V-PAM (30/36) **i-PAM** (45) **Double** **Adjust** **Restart** **Auto Changeover** **Fresh** **Optional** **Economy** **Sleep** **Program** **Optional** **W+S** **Filter**

CLASS A ALL DC **ABYA30LB** **CLASS A ALL DC** **ABYA36LB ABYA36LC** **CLASS A ALL DC** **ABYA45LC** **CLASS A ALL DC** **ABYA54LC**

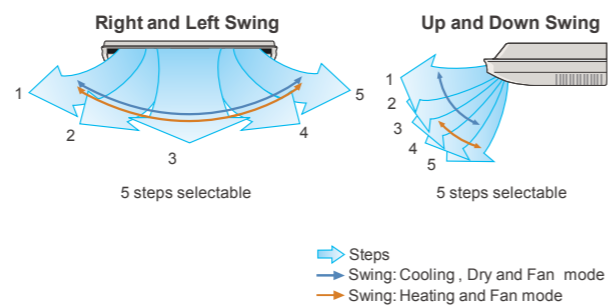
Optional: Wireless R.C., Wired R.C., For ABYA30/36LB, For ABYA45LC (For single phase), For ABYA36/45/54LC (For 3 phase)

Installation



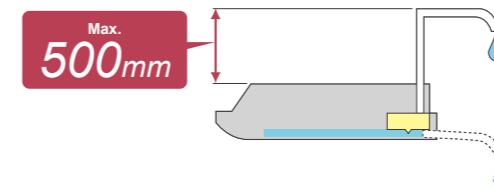
Multi auto swing

A combination of right/left and up/down directional swing allows 3-dimensional air direction control.



Condensate lift-up mechanism (Option)

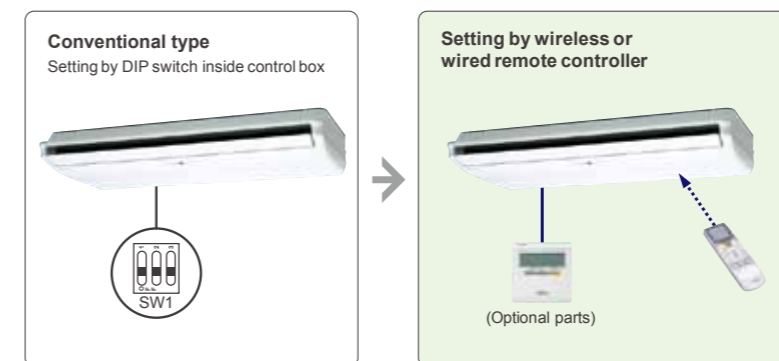
Optional drain lift-up mechanism allows flexible installation.



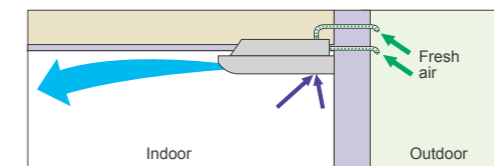
Easy installation

Main work settings can be done easily from the remote controller at installation

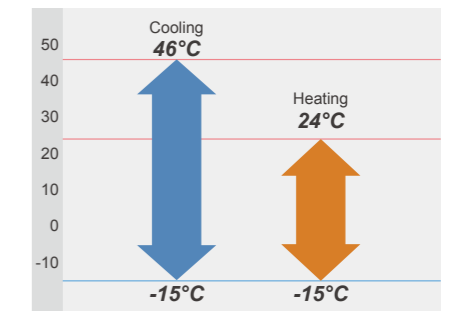
- Main work settings**
- High ceiling setting
 - Auto restart
 - Temperature adjustment when cooling / heating



Fresh air intake



Low ambient operation



Optional parts

- Wired Remote Controller: UTB-YUD
- Drain Pump Unit: UTR-DPB24T
- External Indication Kit: UTY-XWZX
- External Control Set: UTD-ECS5A

Specifications

Model No.	Indoor unit		ABYA30LB	ABYA36LB	ABYA36LC	ABYA45LC	ABYA45LC	ABYA54LC
	Outdoor unit		AOYA30LF	AOYA36LF	AOYD36LA	AOYA45LB	AOYD45LA	AOYD54LA
Power Source	V/∅/Hz		230/1/50	230/1/50	400/3/50	230/1/50	400/3/50	400/3/50
Capacity	Cooling	kW	8.50	9.40	10.00	12.50	12.50	14.00
	Heating	kW	10.00	11.20	11.20	14.00	14.00	16.00
Input Power	Cooling/Heating	kW	2.65/2.77	2.93/3.02	2.84/2.87	3.89/3.77	3.89/3.88	4.65/4.67
EER - Energy Class	Cooling	W/W	3.21-A	3.21-A	3.52-A	3.21-A	3.21-A	3.01-B
	Heating	W/W	3.61-A	3.71-A	3.9-A	3.71-A	3.61-A	3.43-B
Running Current	Cooling/Heating	A	11.6/12.2	12.8/13.2	4.3/4.4	17.0/16.5	5.8/5.8	6.9/6.9
Moisture Removal		l/h	2.5	3.0	3.0	4.5	4.5	5.0
Noise (Indoor)	Cooling	H/M/L/Q	45/43/37/32	47/43/37/32	47/43/37/32	49/45/39/34	49/45/39/34	51/48/42/38
	Cooling		53	54	51	55	54	55
Airflow Rate (High)	Indoor / Outdoor	m³/h	1660/3600	1900/3800	1900/6200	2100/6600	2100/6900	2300/6900
	Indoor	mm	240x1660x700	240x1660x700	240x1660x700	240x1660x700	240x1660x700	240x1660x700
Net Dimension H x W x D	Indoor	kg(lbs)	46(101)	46(101)	46(101)	46(101)	46(101)	48(106)
		mm	830x900x330	830x900x330	1290x900x330	1290x900x330	1290x900x330	1290x900x330
	Outdoor	kg(lbs)	61(135)	61(135)	107(236)	98(216)	107(236)	107(236)
		mm	830x900x330	830x900x330	1290x900x330	1290x900x330	1290x900x330	1290x900x330
Piping Connections (Small / Large)		mm	9.52/15.88	9.52/15.88	9.52/15.88	9.52/15.88	9.52/15.88	9.52/15.88
Drain Pipe Diameter (Inner/Outer)		mm	22.0/25.6	22.0/25.6	22.0/25.6	22.0/25.6	22.0/25.6	22.0/25.6
Max Pipe Length (Chargeless)		m	50	50	75	50	75	75
Height Difference			30	30	30	30	30	30
Operation Range	Cooling	°CDB	-15~46	-15~46	-15~46	-15~46	-15~46	-15~46
	Heating	°CDB	-15~24	-15~24	-15~24	-15~24	-15~24	-15~24
Refrigerant			R410A	R410A	R410A	R410A	R410A	R410A

Dimensions

Models: ABYA30LB / ABYA36LB / ABYA36LC / ABYA45LC / ABYA54LC

(Unit : mm)

